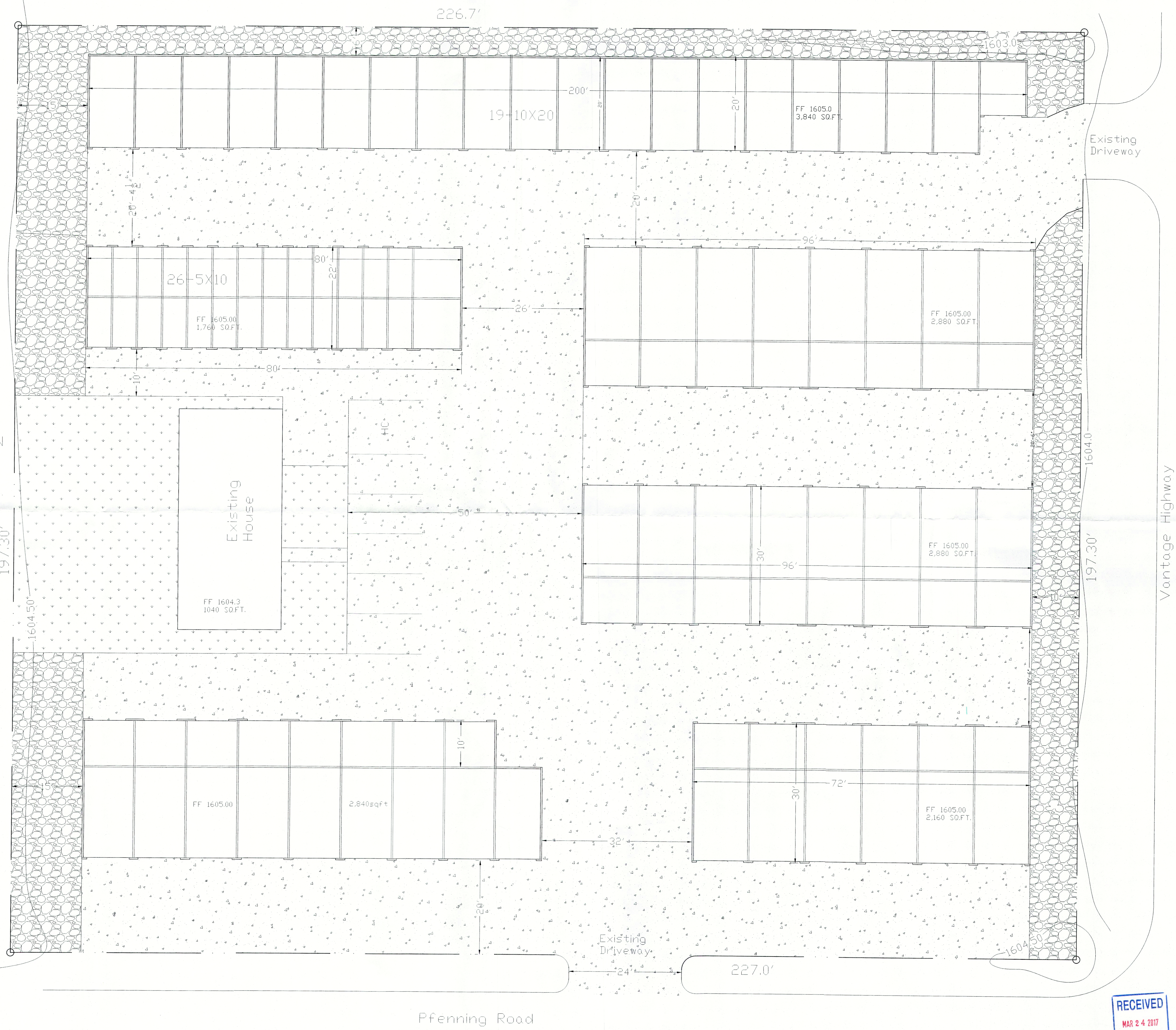
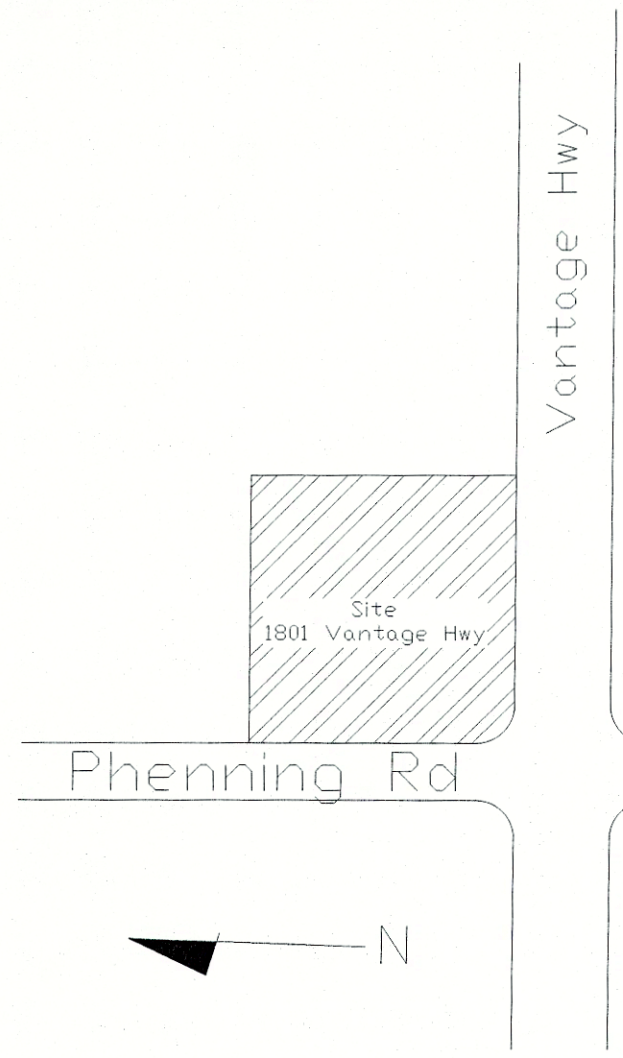


Project Description:
 Zoning: Limited Commercial
 Jurisdiction: Kittitas County
 Parcel #: 024734
 Address: 1801 Vantage Hwy.
 Site Area: 44,787 sq.ft. (1.3 Acres)
 16,340 sq. ft. of new mini storage
 Impervious Surface: Driveways and
 buildings, 37,054 sq. ft.
 Landscape Area: 7,733 sq. ft.
 Storm Water: retainage req. 4,943cf
 provided 5,455cf
 Parking: 5 standards, 1 HC

SCALE: 1"=20'
 N



The Ranch Storage
 PROJECT NAME

Vantage Hwy
 LOCATION

STALDER INTERESTS, INC.
 2000 QUARTZ MTN. DR.
 ELLENSBURG, WA 98926
 PHONE: 509-925-2012

Landscape
 SHEET TITLE

3-21-2017
 DATE

Storage
 PROJECT #

L_1
 SHEET #

